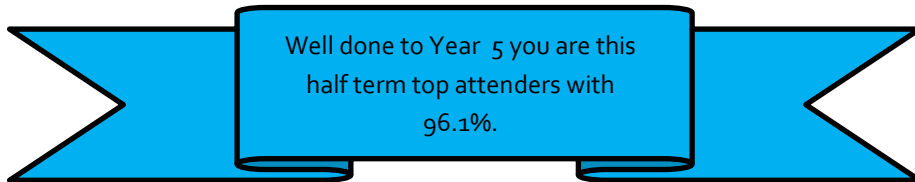


# Attendance Newsletter

Welcome to our half term attendance newsletter! Attendance matters every day, for every child so we thought we should keep you up to date too, so that you can help us be awesome attenders.



### Medical Appointments

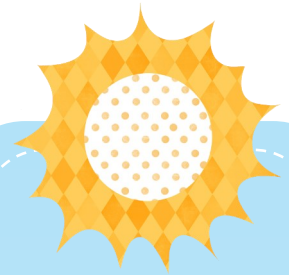
Where possible, please make medical and dental appointments towards the end of the school day, or after school has finished so that your child does not miss valuable learning time. Please bring in evidence such as an appointment card or letter to authorise the absence. Please be aware that medical appointments will affect your child's attendance level.

### Holiday's in term time

Taking holidays in term time disrupts the continuity of your child's education and may reduce their chance of success. Parents are expected to take their children on holiday when school is closed. You **MUST** inform school if you are planning to take your child on holiday during term time. You may be asked to meet with Mr Johnson to discuss the request, and the Local Authority may issue you with a Fixed Penalty Notice if the leave is not granted.



Please be aware that if we suspect that your child is on holiday (and school have not had prior notification), a home visit may be carried out and you may be issued with a Fixed Penalty Notice. A Fixed Penalty Notice is issued as a warning for knowingly taking your child out of school without the schools permission. Penalties may be more severe, including prosecution, if you chose to take your child on holiday more than once in an academic year.



### This half term class attendance

- Nursery –89.0%
- Reception - 95.5%
- Year 1 - 96.3%
- Year 2 - 95.4%
- Year 3 - 94.7%
- Year 4 - 94.8%
- Year 5 - 96.1%
- Year 6 - 93.5%

### **Whole school attendance is.....**

**95.1%**

### **Our Target is**

**96%**

